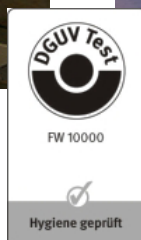


ergolastec[®] clean THE HYGIENIC MAT



industry_clean

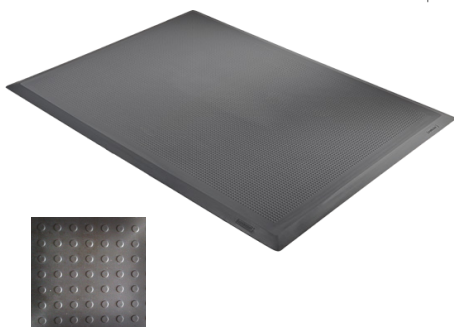
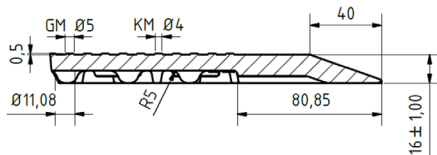
basic data	clean_dry	clean_diamond
Upper surface	flat structure	diamond structure
Bottom side	damping hemisphere	damping hemisphere
Outer edge	20° bevelled	20° bevelled
Lenght/width/thickness	1350 x 1000 x 16 mm*	1350 x 1000 x 20 mm*
Weight	19 ± 1 kg	19,5 ± 1 kg
Hardness	55 ± 4 Shore A	55 ± 4 Shore A
Temperatur resistance	- 35°C bis + 95°C	- 35°C bis + 95°C
Interlocking designs	Typ A to K	Typ A to K
Material	NBR	NBR
Colour	grey	grey
Biocide properties	resistant to fungus and bacteria	

*Tolerances according to DIN ISO 3302-1M4;



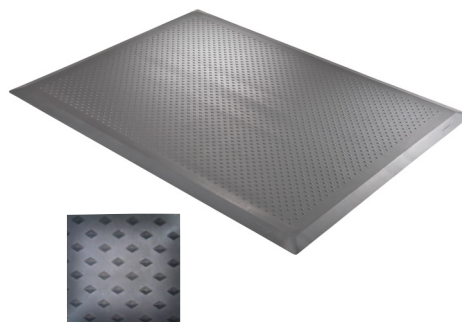
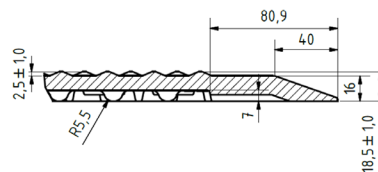
- Its biocidal finish makes it particularly suitable for use in hygiene-sensitive areas such as canteen kitchens, butcher's shops and abattoirs
- ERGOLASTEC clean provides high skid-resistant even on soiled surfaces
- Bevelled outside edges for reduced risk of stumbling
- Mat stays in place on the floor, its own weight preventing it from slipping when laid loosely in isolation
- Very firm and sturdy making it suitable as a base when using transportation equipment
- Available in attractive grey tone
- ERGOLASTEC clean is made of biocidal rubbercompound according to the hygienic specifications and prevent from bacterium- and fungal-formation
- This mat is due to the choice of high quality material comperatively odour less and therefore good applicable at indoor- areas
- Cleaning of mat and floor facilitated by simple removal of mat
- Further information for application and handling you will find in our practice handbook ur www.ergolastec.com/Download

ergolastec clean_dry



Mat with flat structure for dry workstations

ergolastec clean_diamond



Mat with diamond structure for workstations with increased slip danger